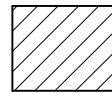
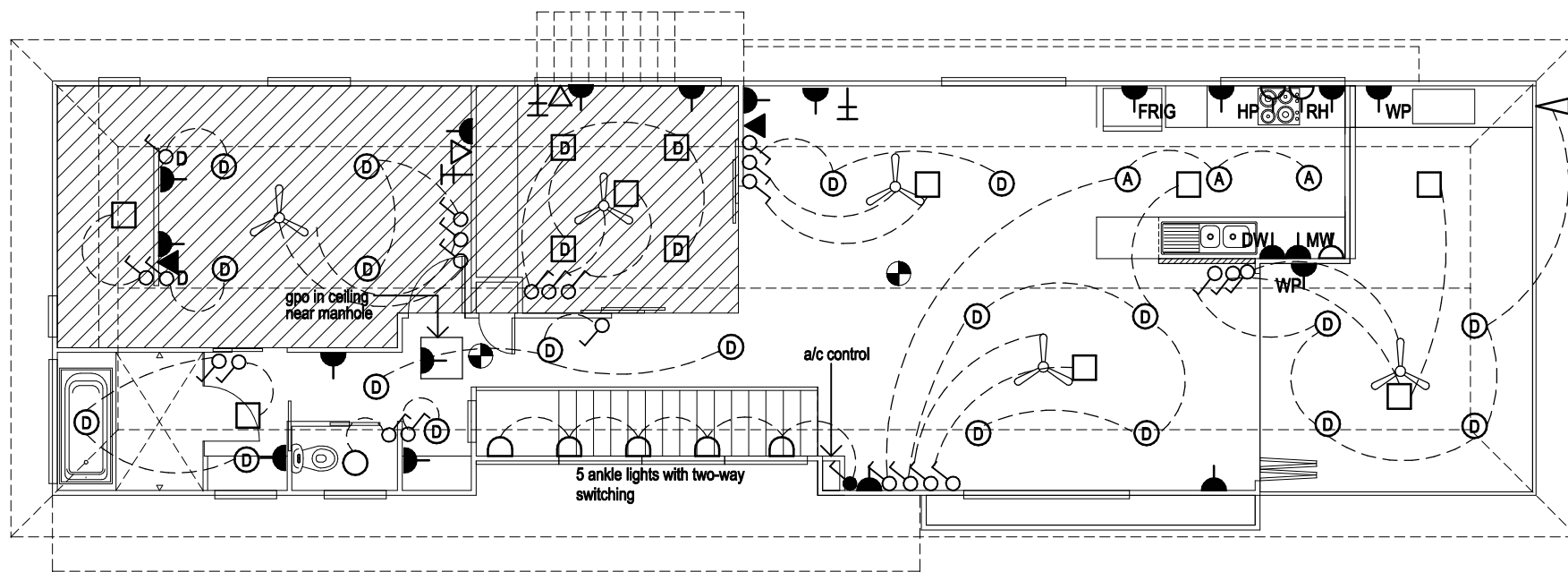


LEGEND

- ⊙ ceiling mounted light
- batten holder
- Ⓛ square gimbal downlight
- square fluorescent light
- ∩ ankle lights
- ⌋ single general purpose outlet
- ⌋ double general purpose outlet
- ⌋ television point
- ▽ data point
- ▼ telephone point
- ▭ MB meter box
- ⊕ smoke alarm (240V battery backup)
- ⊗ 3 in 1 exhaust fan
- fluorescent bar light
- Ⓜ wall light
- Ⓛ recessed downlight
- Ⓜ adjustable recessed downlight
- ▽ floodlight
- Ⓜ AC air conditioning unit
- Ⓜ chrome up-down light
- Ⓜ GAS HWS gas hot water system
- Ⓜ switch
- two-way switch
- Ⓜ switch with dimmer
- Ⓜ ceiling fan
- FRIG connection for refrigerator
- DW connection for dishwasher
- WM connection for washing machine
- HWU connection for hot water unit
- WP weatherproof
- CM ceiling mounted double gpo
- HP connection for hot plate & oven (permanently wired)
- RH connection for range hood
- MW connection for microwave

 40% energy efficient lighting



ENERGY EFFICIENT LIGHTING

FLUORESCENT LIGHTS OR COMPACT FLUORESCENT LIGHTS (CFLs) ARE TO BE USED IN 40% OF THE TOTAL AREA OF ALL ROOMS. AREA MEASURED TO INCLUDE GARAGE.